

# standard pressure gauges MS2

## ABS case - DS 40-50-63

# 1.02



They can be used with gaseous or liquid media which do not corrode copper alloy, which do not have high viscosity and do not crystallize. They are suitable for pneumatic and hydraulic circuits, compressors, filters and pressure regulators.

### Functional and constructive characteristics

1.02

**Accuracy class:** 2,5 as per EN 837-1

**Ambient temperature:** -20°C...+60°C.

**Process temperature:** +60°C max.

**Working pressure:** 75% max of F.S.V.

**Overpressure:** not applicable.

**Socket material:** brass.

**Elastic element:** phosphor bronze.

**Case:** ABS.

**Window:** polycarbonate.

**Movement:** brass.

**Dial:** ABS, white with black markings.

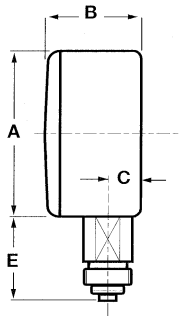
**Pointers:** Aluminium, painted black for lower connection; ABS black for back connection.

### RANGES

Ranges	bar	bar ext. psi int.
-1...0	◆	◆
0...1	◆	◆
0...1,6	◆	◆
0...2,5	◆	◆
0...4	◆	◆
0...6	◆	◆
0...10	◆	◆
0...16	◆	◆
0...25	◆	◆
0...40	◆	◆

Ranges	psi	inHg
-30...0		◆
0...15	◆	
0...30	◆	
0...60	◆	
0...100	◆	
0...160	◆	
0...200	◆	
0...300	◆	
0...400	◆	
0...500	◆	
0...600	◆	

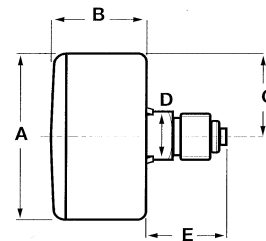
## TYPES AND DIMENSIONS (mm.)



## TYPE A

stem mounting;  
lower connection.

DS	øA	B	C	E
40	41,5	23,4	7,7	20,3
50	48,7	27	9,7	24,6
63	61,6	28	10	24,6



## TYPE D

stem mounting;  
back connection.

DS	øA	B	C	D	E
40	41,5	27	20,1	14	20,3
50	48,7	27	24,1	14	23,3
63	61,6	28	30,3	14	23,3

## HOW TO ORDER

	CODE & DESCRIPTION
<b>1</b>	1 - Bourdon tube pressure gauges
<b>02.1</b>	02.1 - std. pressure gauges, ABS case, MS2
<b>A</b>	A - lower connection D - back connection
<b>B</b>	A - DS 40 B - DS 50 C - DS 63
<b>2</b>	1 - ranges up to 1,6 bar and vacuum 2 - ranges from 2,5 to 40 bar
<b>0...10 bar</b>	See ranges tables
<b>13M</b>	11M - 1/8" BSP M 12M - 1/8" BSP M tapered 13M - 1/8" NPT M 21M - 1/4" BSP M 22M - 1/4" BSP M tapered 23M - 1/4" NPT M
<b>L30</b>	See options table

## OPTIONS

DESCRIPTION	CODE
Maximum pointer	<b>L30</b>
Accuracy $\pm 1,6\%$	<b>K16</b>