

standard pressure gauges MS3

painted steel case

DS 40-50-63

1.03



They can be used with gaseous or liquid media which do not corrode copper alloy, which do not have high viscosity and do not crystallize. They are suitable for pneumatic and hydraulic circuits, compressors, filters and pressure regulators.

Functional and constructive characteristics

1.03

Accuracy class: 2,5 as per UNI EN 837-1

Ambient temperature: -20°C...+60°C.

Process temperature: + 60 °C max.

Working pressure: 75% max of F.S.V.

Overpressure: not applicable.

Socket material: brass.

Elastic element: phosphor bronze.

Case: painted steel.

Window: polycarbonate.

Movement: brass.

Dial: Galvanically protected steel, white with black markings.

Pointers: Aluminium, painted black.

RANGES

Ranges	bar	bar ext. psi int.
-1...0	◆	◆
0...1	◆	◆
0...1,6	◆	◆
0...2,5	◆	◆
0...4	◆	◆
0...6	◆	◆
0...10	◆	◆
0...16	◆	◆
0...25	◆	◆
0...40	◆	◆
0...60	◆	◆
0...100	◆	◆
0...160	◆	◆
0...250	◆	◆

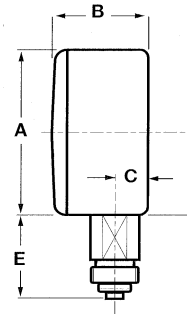
Ranges	psi	inHg
-30...0		◆
0...15	◆	
0...30	◆	
0...60	◆	
0...100	◆	
0...160	◆	
0...200	◆	
0...300	◆	
0...400	◆	
0...500	◆	
0...600	◆	
0...1000	◆	
0...1500	◆	
0...2000	◆	
0...3000	◆	

standard pressure gauges MS3

painted steel case - DS 40-50-63

1.03

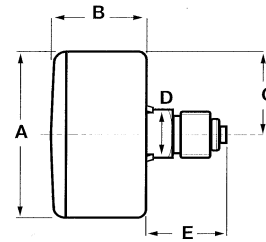
REV. 00 E 10/00



TYPE A

stem mounting;
lower connection.

DS	øA	B	C	E
40	41,5	23,4	7,7	20,3
50	48,7	27	9,7	24,6
63	61,6	28	10	24,6



TYPE D

stem mounting;
back connection.

DS	øA	B	C	D	E
40	41,5	27	20,1	14	20,3
50	48,7	27	24,1	14	23,3
63	61,6	28	30,3	14	23,3

HOW TO ORDER

	CODE & DESCRIPTION
1	1 - Bourdon tube pressure gauges
03.1	03.1 - standard pressure gauges, painted steel case, MS3
A	A - lower connection D - back connection
B	A - DS 40 B - DS 50 C - DS 63
2	1 - ranges < 2,5 bar and vacuum 2 - ranges 2,5...40 bar 3 - ranges > 40 bar
0...10 bar	See ranges tables
13M	11M - 1/8" BSP M 12M - 1/8" BSP M tapered 13M - 1/8" NPT M 21M - 1/4" BSP M 22M - 1/4" BSP M tapered 23M - 1/4" NPT M
L21	See Options table

OPTIONS

DESCRIPTION	CODE
Maximum pointer	L30
Accuracy $\pm 1,6\%$	K16
Blow out vent	TPS

IN ORDER TO IMPROVE THEIR PRODUCTION, MESSRS. NUOVA FIMA RESERVE THE RIGHT TO THEMSELVES TO MAKE ALL THE MODIFICATIONS THAT THEY DEEM INDISPENSABLE AT ANY TIME. UPDATED DATA-SHEETS ARE AVAILABLE ON SITE: www.nuovafima.com