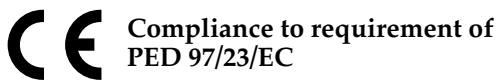


liquid filled pressure gauge

MGS10 - DS 50

1.10



Compliance to requirement of
PED 97/23/EC

Instruments designed for use on power units, pumps, hydro-cleaning machines, presses, engine compressors, turbines, diesel engines, chemical, petrochemical and refrigerating plants and on machines and equipment where pulsating pressures or mechanical vibrations are apparent. They can be used with gaseous or liquid media which do not corrode copper alloy and which do not have high viscosity or do not cristalize.

Functional and constructive characteristics.

1.10.2 Fillable

Accuracy: 1,6 as per EN 837-1.

Ambient temperature: - 25...+65 °C.

Process temperature: max +120 °C (max + 65 °C when filled).

Working pressure: max 75% of the full scale value .

Over pressure limit: (referred to the full scale value):

25% for pressure ranges \leq 40 bar;

15% for pressure ranges $>$ 40 bar.

Protection: IP 65 as per IEC 529.

Socket material: brass.

Elastic element:

phosphor bronze C-shaped for pressure ranges \leq 40 bar;

phosphor bronze spiral for pressure ranges 60...400 bar.

Welding:

tin-copper alloy for pressure ranges \leq 40 bar;

tin-silver alloy for pressure ranges 60...400 bar.

Case: AISI 304 st.st.

Window: plexiglass.

Movement: brass.

Dial: Aluminium, white with black markings.

Special dials: ranges different from standard, or custom artwork, available on request.

Pointer: black anodized aluminium.

Gasket: EPDM.

Blow out vent: EPDM.

1.10.3 Liquid filled

Accuracy: 1,6 as per EN 837-1.

Ambient temperature: +15...+65 °C.

Process temperature: max +65 °C.

Working pressure: max 75% of the full scale value .

Over pressure limit: (referred to the full scale value):

25% for pressure ranges \leq 40 bar;

15% for pressure ranges $>$ 40 bar.

Protection: IP 65 as per IEC 529.

Socket material: brass.

Elastic element:

phosphor bronze C-shaped for pressure ranges \leq 40 bar;

phosphor bronze spiral for pressure ranges 60...400 bar.

Welding:

tin-copper alloy for pressure ranges \leq 40 bar;

tin-silver alloy for pressure ranges 60...400 bar.

Case: AISI 304 st.st.

Window: plexiglass.

Movement: brass.

Dial: Aluminium, white with black markings.

Special dials: ranges different from standard, or custom artwork, available on request.

Pointer: black anodized aluminium.

Gasket: EPDM.

Blow out vent: EPDM.

Damping liquid: glycerine 98%.

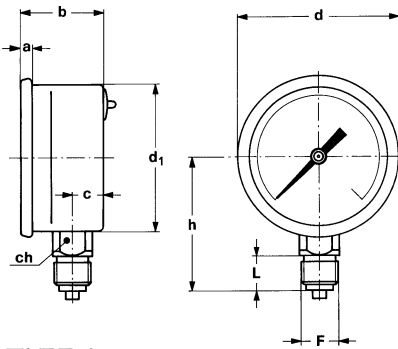
liquid filled pressure gauge

MGS10 - DS 50

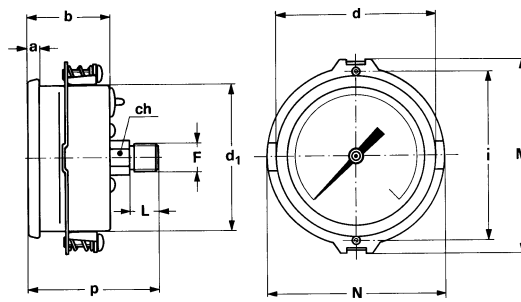
1.10

REV. 05 E 05/02

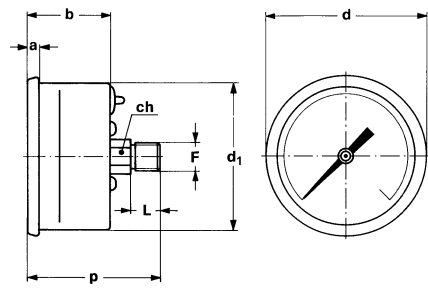
TYPE, DIMENSIONS AND WEIGHTS



TYPE A
stem mounting;
lower connection.



TYPE B
flush mounting, ring-clamp;
back connection.



TYPE D
stem mounting;
back connection.

DS	TYPE	F	a	b	c	d	d ₁	h	i	p	M	N	L	ch	Weight 10.2	Weight 10.3
50	A	1/4" BSP	4	29	11	56	51	46,5					12	14	0,1 kg	0,145 kg
50	A	1/4" NPT	4	29	11	56	51	49,5					15	14	0,1 kg	0,145 kg
50	B	1/8" BSP or NPT	4	29		56	51		58,5	46	67,5	62,6	10	12	0,085 kg	0,132 kg
50	D	1/8" BSP or NPT	4	29		56	51			46			10	12	0,085 kg	0,132 kg

(dimensions in mm.)

HOW TO ORDER

CODE & DESCRIPTION

1	1- bourdon tube pressure gauges
10	10 - liquid filled pressure gauge MGS10
3	2 - fillable version 3 - filled version
B	A - lower connection - stem mounting B - back connection - flush mounting, ring- clamp D - back connection - stem mountintg
B	B - DS 50
2	2 - ranges ≤ 40 bar 3 - ranges > 40 bar
0/10 bar	see ranges tables
11M	11M - 1/8" BSP 13M - 1/8" NPT 21M - 1/4" BSP (1) 23M - 1/4" NPT (1)
S03	see options table

(1) to be ordered with option D01, if the instruments have back connection.

RANGES

TAB. 1

Ranges	bar	kPa	MPa	bar ext. psi int.	bar ext. kPa int.	bar ext. MPa int.
0...2,5	♦		♦	♦	♦	
0...4	♦		♦	♦	♦	
0...6	♦		♦	♦	♦	
0...10	♦		♦	♦		♦
0...16	♦		♦	♦		♦
0...25	♦		♦	♦		♦
0...40	♦		♦	♦		♦
0...60	♦			♦		♦
0...100	♦			♦		♦
0...160	♦			♦		♦
0...250	♦	♦		♦		♦
0...400	♦	♦		♦		♦
0...600		♦				
0...1000		♦				
0...1600		♦				
0...2500		♦				

TAB. 2

Ranges	psi int. kPa ext.	psi ext. bar int.	psi ext. kg/cm ² int.
0...30	♦	♦	♦
0...60	♦	♦	♦
0...100	♦	♦	♦
0...160	♦	♦	♦
0...200	♦	♦	♦
0...300	♦	♦	♦
0...400	♦	♦	♦
0...500	♦	♦	♦
0...600	♦	♦	♦
0...1000	♦	♦	♦
0...1500	♦	♦	♦
0...2000	♦	♦	♦
0...3000	♦	♦	♦
0...4000	♦	♦	♦
0...5000	♦	♦	♦
0...6000	♦	♦	♦

OPTIONS

DESCRIPTIONS	CODE
Brass nipple, 1/8" x 1/4"	D01
Without restrictor (2)	S03

(2) lower connection only.