

# pressure gauges "solid-front" turret case DS 125 MGS30 ~~EXTRA~~

# 1.30.X

- thermoplastic case
- AISI 316L wetted parts
- dampened movement
- vibrations proof



These instruments are built in accordance with safety specifications ANSI B40.1, UNI-EN 837-2. The safety construction consists of a stainless steel "solid-front" safety cell placed behind the scale, which welding to socket gives to instrument an exceptional strength. Whenever, due to leaks, an internal pressure is created or the elastic element is broken the safety cell protects the front and sides, meanwhile the blow out back is released from the case. They are designed for use in food, beverage, pharmaceutical, petrochemical, conventional and nuclear power plants. The dampened movement make them particularly suitable in presence of high vibrations and pulsating pressure.

## Functional and constructive characteristics

### 1.30.X.A - stainless steel wetted parts

**Accuracy:** Grade 2A as per ASME B40.1 ( $\pm 0,5\%$  of span).  
**Ambient temperature:** -25...+65 °C.  
**Process temperature:** -30...+150 °C max.  
**Working pressure:** max 75% of full scale value.  
**Overpressure:** (temporary): 30% of full scale value.  
**Protection degree:** IP 65 as per IEC 529.  
**Socket material:** AISI 316 L.  
**Elastic element:** AISI 316L seamless tube.  
**Welding:** AISI 316 T.I.G.  
**Case and blow out disk:** polyamide, fiberglass reinforced.  
**Ring:** polypropylene, fiberglass reinforced.  
**Safety cell:** AISI 304 st.st.  
**Window:** Plexiglas.  
**Movement:** stainless steel, dampened.  
**Dial:** aluminium, white with black markings.  
**Pointer:** aluminium, micrometric adjustable.  
**Gaskets:** EPDM.

### 01.30.X.D - stainless steel wetted parts

**Case:** phenolic resin.  
**Ring and blow out disk:** polypropylene, fiberglass reinforced.  
**Separating wall:** AISI 304 st.st.  
**Safety cell:** not available.

**Other features:** as type 1.30.X.A

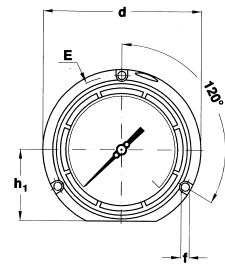
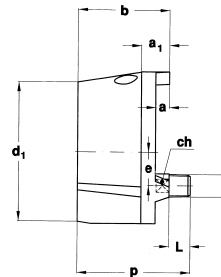
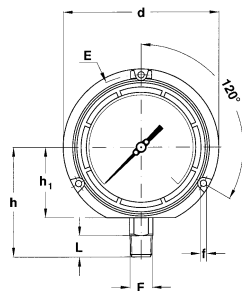
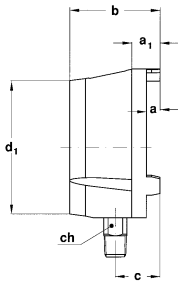
### 1.30.X + option E07 : Monel 400 wetted parts

**Accuracy:** Grade 1A as per ANSI B40.1 ( $\pm 1,0\%$  of span).  
**Socket material:** MONEL 400.  
**Elastic element:** MONEL 400 seamless tube.  
**Welding:** TIG.  
**Ranges:** the same of standard version from 4 to 600 bar (0/5000 psi not available).  
**Leak test:** leakage rate  $< 1 \times 10^{-7}$  mbar x l x s<sup>-1</sup> (helium test by mass spectrometer).  
**Other features:** as 1.30.X.

## OPTIONS

DESCRIPTION	Code
S6 version - Monel 400 wetted parts	E07
Panel mounting Kit	F11
Oxygen service	P02
Tropicalization	T01
AISI 316 st.st. label	T25
Safety glass window	T32
Restrictor AISI 304 $\varnothing$ 0,7 mm	V11

## TYPES, DIMENSIONS AND WEIGHTS

**TYPE A**

stem mounting;  
lower connection.

**TYPE D**

stem mounting;  
back connection.

TYPE	F	a	a <sub>1</sub>	b	c	d	d <sub>1</sub>	e	E	f	h	h <sub>1</sub>	p	L	ch	Weight
A	1/2" NPT	13	27	86	42	148	126	-	137	6,5	103,5	66,5	-	20	22	0,81 Kg.
D	1/2" NPT	13	27	86	-	148	129	31	137	6	-	66,5	106	20	17	1,0 Kg.

(dimensions in mm.)

**HOW TO ORDER****RANGES**

## PRESSURE

## VACUUM &amp; COMPOUND

	CODE & DESCRIPTION
<b>1</b>	1 - Bourdon tube pressure gauges
<b>30</b>	30 - MGS30 pressure gauge "solid-front", turret case
<b>X</b>	<del>EXTRA</del>
<b>A</b>	A - lower connection D - back connection
<b>F</b>	F - DN125
<b>2</b>	2 - up to 40 bar 3 - above 40 bar
<b>0/10 bar</b>	See ranges tables
<b>43M</b>	23M - 1/4" NPTM 43M - 1/2" NPTM
<b>F11</b>	See options table

Ranges	bar	kPa	MPa	Kg/cm <sup>2</sup>
0...1			♦	
0...1,6			♦	
0...2,5	♦		♦	♦
0...4	♦		♦	♦
0...6	♦		♦	♦
0...10	♦		♦	♦
0...16	♦		♦	♦
0...25	♦		♦	♦
0...40	♦		♦	♦
0...60	♦		♦	♦
0...100	♦		♦	♦
0...160	♦			♦
0...250	♦	♦		♦
0...300	♦	♦		♦
0...400	♦	♦		♦
0...600	♦	♦		♦
0...1000	♦	♦		♦
0...1600		♦		
0...2500		♦		

Ranges	psi	psi int.
		kPa est.
0...30	♦	♦
0...60	♦	♦
0...100	♦	♦
0...160	♦	♦
0...200	♦	♦
0...300	♦	♦
0...400	♦	♦
0...600	♦	♦
0...800	♦	♦
0...1000	♦	♦
0...1500	♦	♦
0...2000	♦	♦
0...3000	♦	♦
0...4000	♦	♦
0...5000	♦	♦
0...6000	♦	♦
0...10000	♦	♦
0...15000	♦	♦

Ranges	bar	Kg/cm <sup>2</sup>
-1...1,5	♦	♦
-1...3	♦	♦
-1...5	♦	♦
-1...9	♦	♦
-1...15	♦	♦
-1...24	♦	♦

Ranges	psi*	psi int.*
		kPa est.
-30...15	♦	♦
-30...30	♦	♦
-30...60	♦	♦
-30...100		♦
-30...150	♦	♦
-30...200		♦
-30...300	♦	♦

\* vacuum unit of measurement: "in/Hg"